



# From Soil to Systems

A digital platform for permaculture learning,  
community land care, and regenerative livelihoods



# The Challenge

## *Why this matters*

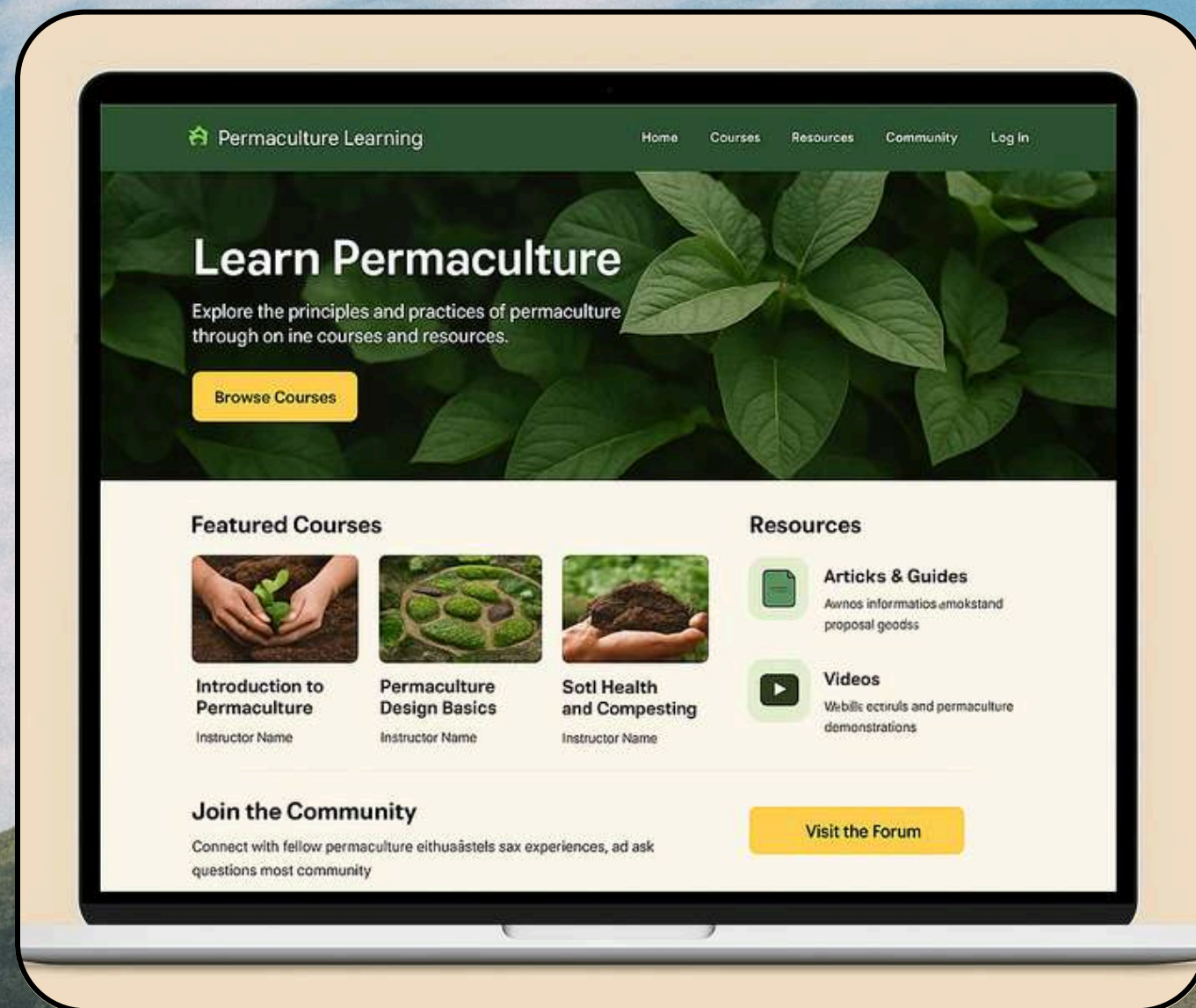
- Thousands of young Sicilians inherit land they cannot care for
- Soils are eroding, desertification is increasing
- Regenerative skills are fragmented, inaccessible
- There's no shared space to connect land, knowledge, and community





# The solution

*A platform for soil care,  
learning, and community connection*



Open-access educational  
modules on permaculture

Matchmaking between  
landowners and practitioners

Digital toolkits, videos, stories, and  
training paths



# Key Features



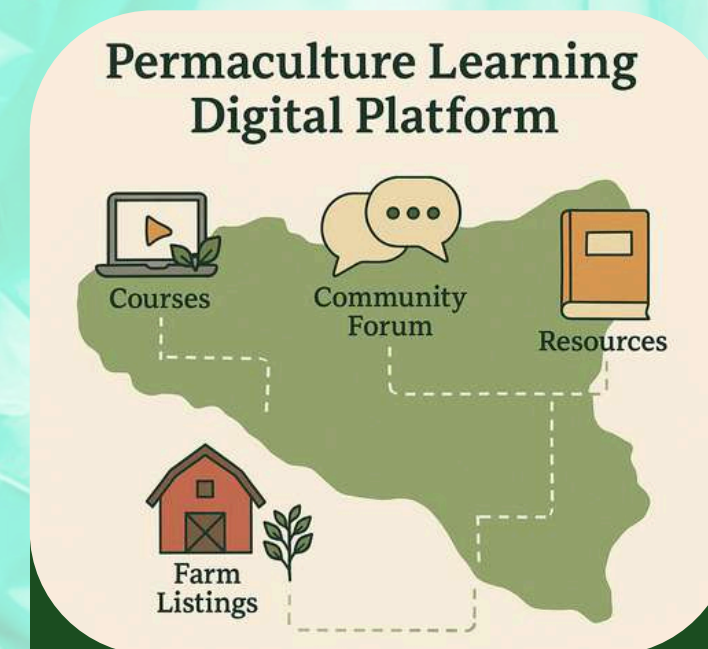
**Interactive  
permaculture courses**



**Practical guides  
& video tutorials**



**Land-skills  
matchmaking section**



**Map of  
regenerative initiatives**



# The Partners



Markesing is an Italian-based organization that develops digital solutions aimed at generating social and cultural impact. With over 400 hours of training delivered across 12 public schools, they have built strong connections in the educational field. One of their most recent projects, EmpathyBot, is an AI-powered platform designed to support parents navigating high-conflict divorces. In "From Soil to Systems", Markesing leads the digital development and strategic coordination of the platform.


Settevoci is a grassroots initiative that has revived an abandoned rural masseria in Castiglione di Sicilia, transforming it into a hub for permaculture and cultural exchange. Through regenerative agriculture, hands-on learning, and inclusive gatherings, they have created a living space rooted in sustainability and shared knowledge. Their on-the-ground expertise will be key in shaping the content, piloting the platform, and anchoring the project in real-world practice.





A pair of hands is shown from the bottom, cupping a small, round succulent plant with thick, overlapping leaves. The plant is nestled in a mound of dark, rich soil. The background is a dark, textured surface, possibly a wall of moss or a similar natural setting. The lighting is soft, highlighting the texture of the soil and the succulent's leaves.

# What we seek from the Bootcamp

- Co-design support for structure & engagement
  - Advice on governance and open-source scaling
  - Connect with other soil literacy & community land care models
  - Share what we've learned and keep learning from others
- 
- The bottom right of the slide features decorative elements. On the left, there are two vertical rounded rectangles: a light green one on the left and a dark green one on the right. To the right of these rectangles are stylized illustrations of green plants with large, round leaves on thin stems, set against a white background.



# Thank You.

**We believe that caring for soil means caring for life.  
Through knowledge, community, and creativity, we can regenerate not  
just the land, but the way we live together.  
Let's grow this vision.  
Together.**

[info@markesing.com](mailto:info@markesing.com)

+39-3463321502